



- NOTES:**
- DESIGNATION AREA TO BE REDUCED UPON COMPLETION OF WORKS.
- LEGEND**
- — — — — MAIN TUNNEL
 - — — — — LINK SEWER
 - — — — — CSO COLLECTOR
 - = = = = = CONNECTION PIPELINE
 - - - - - VENTILATION DUCTS
 - S — EXISTING RETICULATION SEWER
 - WC — EXISTING TRUNK SEWER
 - SW — EXISTING STORMWATER
 - - - - - PROPOSED DESIGNATION BOUNDARY
 - LID/STRUCTURE FLUSH WITH GROUND
 - LID/STRUCTURE ABOVE GROUND



Plot Date: 18-Jul-13 3:03 p.m.
 File path: P:\0538 - Central Interceptor\04_Drawings\4.3_Working\AEE\AEE_Concent\General\0wg

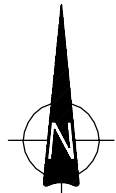
ISSUE	DATE	AMENDMENT	BY	APPD.	BY	DATE
D	18/7/13	ADDRESS NUMBERS ADDED AND AERIAL IMAGE REVISED	AP	JQC	DRAWN	AP
C	12/07/13	ADDRESS NUMBERS ADDED AND AERIAL IMAGE REVISED	AP	JQC	DWG. CHECKED	NL
B	28/05/13	CONSENT ISSUE - DESIGNATION BOUNDARY/ACCESS REVISED	AP	PR	REV'D P.MGR	JS
A	17/08/12	CONSENT ISSUE	AP	PR	APP'D P.DIR	CC

DESIGNED: NL
 DES. CHECKED: JS
 OPERATIONS: -
 SITE LAYOUT AND DESIGNS INDICATIVE ONLY AND SUBJECT TO CHANGE DURING DETAILED DESIGN DEVELOPMENT
 ASSET MANAGER: AEE JULY 2013



CENTRAL INTERCEPTOR GENERAL
 LYON AVENUE (AS2) - PERMANENT WORKS PLAN

CAD FILE: AEE-MAIN-3.1_D	DATE: 18-Jul-13
ORIGINAL SCALE: A1	CONTRACT No. 0538
1:1000 A3	
DRAWING No. AEE-MAIN-3.1	ISSUE D



LEGEND

- - - - - MAIN TUNNEL
- - - - - LINK SEWER
- - - - - CSO COLLECTOR
- - - - - CONNECTION PIPELINE
- - - - - VENTILATION DUCTS
- - - - - EXISTING RETICULATION SEWER
- WC — EXISTING TRUNK SEWER
- SW — EXISTING STORMWATER
- - - - - PROPOSED DESIGNATION BOUNDARY
- LID/STRUCTURE FLUSH WITH GROUND
- LID/STRUCTURE ABOVE GROUND

Plot Date: 19-Jul-13 8:41 a.m.
 File path: P:\0538 - Central Interceptor\04_Drawings\4.3_Working\AEE\AEE_Concent\General\0wg

ISSUE	DATE	AMENDMENT	BY	APPD.	CC	DATE
D	18/7/13	ADDRESS NUMBERS ADDED AND AERIAL IMAGE REVISED	AP	JQC	AP	
C	12/07/13	ADDRESS NUMBERS ADDED AND AERIAL IMAGE REVISED	AP	JQC	NL	
B	28/05/13	CONSENT ISSUE - DESIGNATION BOUNDARY REVISED	AP	PR	JS	
A	17/08/12	CONSENT ISSUE	AP	PR	CC	

DESIGNED	DES. CHECKED	DRAWN	DWG. CHECKED	REV'D P.MGR	APP'D P.DIR
NL	JS	AP	NL	JS	CC

OPERATIONS

ASSET MANAGER

AEE JULY 2013

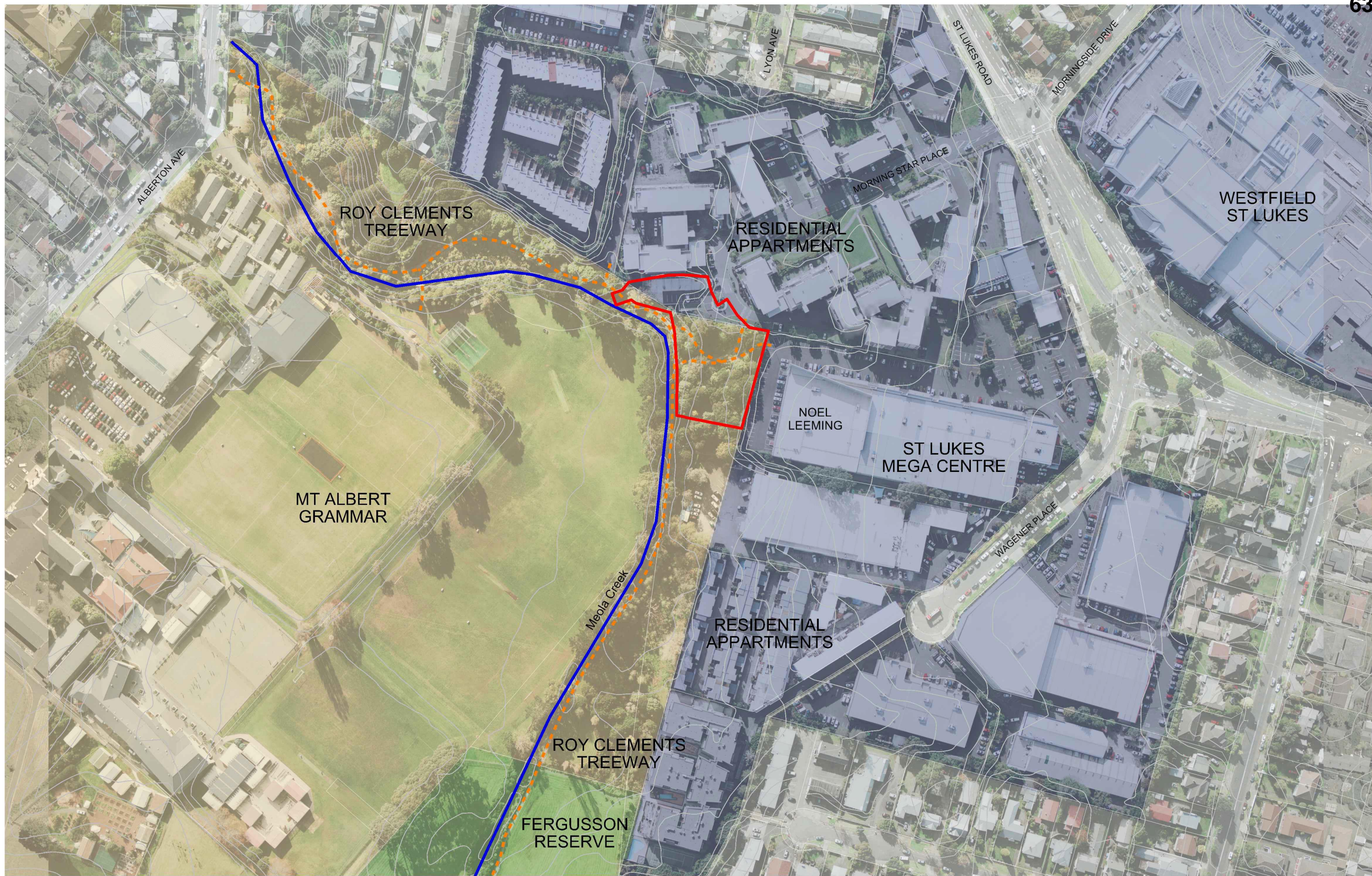
waterCare
services limited

COPYRIGHT - This drawing, the design and concept, remain the exclusive property of Watercare Services Limited and may not be used without approval. Copyright reserved.

**CENTRAL INTERCEPTOR
GENERAL**

LYON AVENUE (AS2) - CONSTRUCTION WORKS PLAN

CAD FILE AEE-MAIN-3.2_D	DATE 18-Jul-13
ORIGINAL SCALE A1	CONTRACT No. 0538
1:1000 A3	
DRAWING No. AEE-MAIN-3.2	ISSUE D

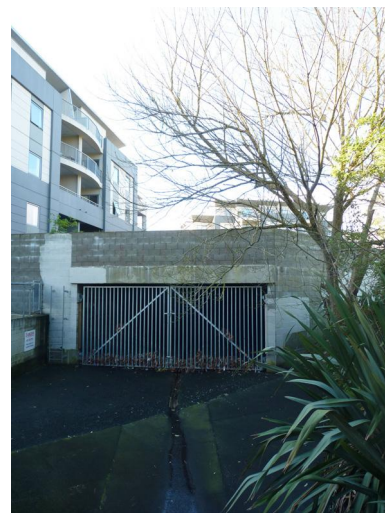




View from walkway within proposed works looking Northeast



View from Morningstar Place to proposed works looking South



Existing Combined Sewer Overflow Channel



Roy Clements Treeway looking Southeast



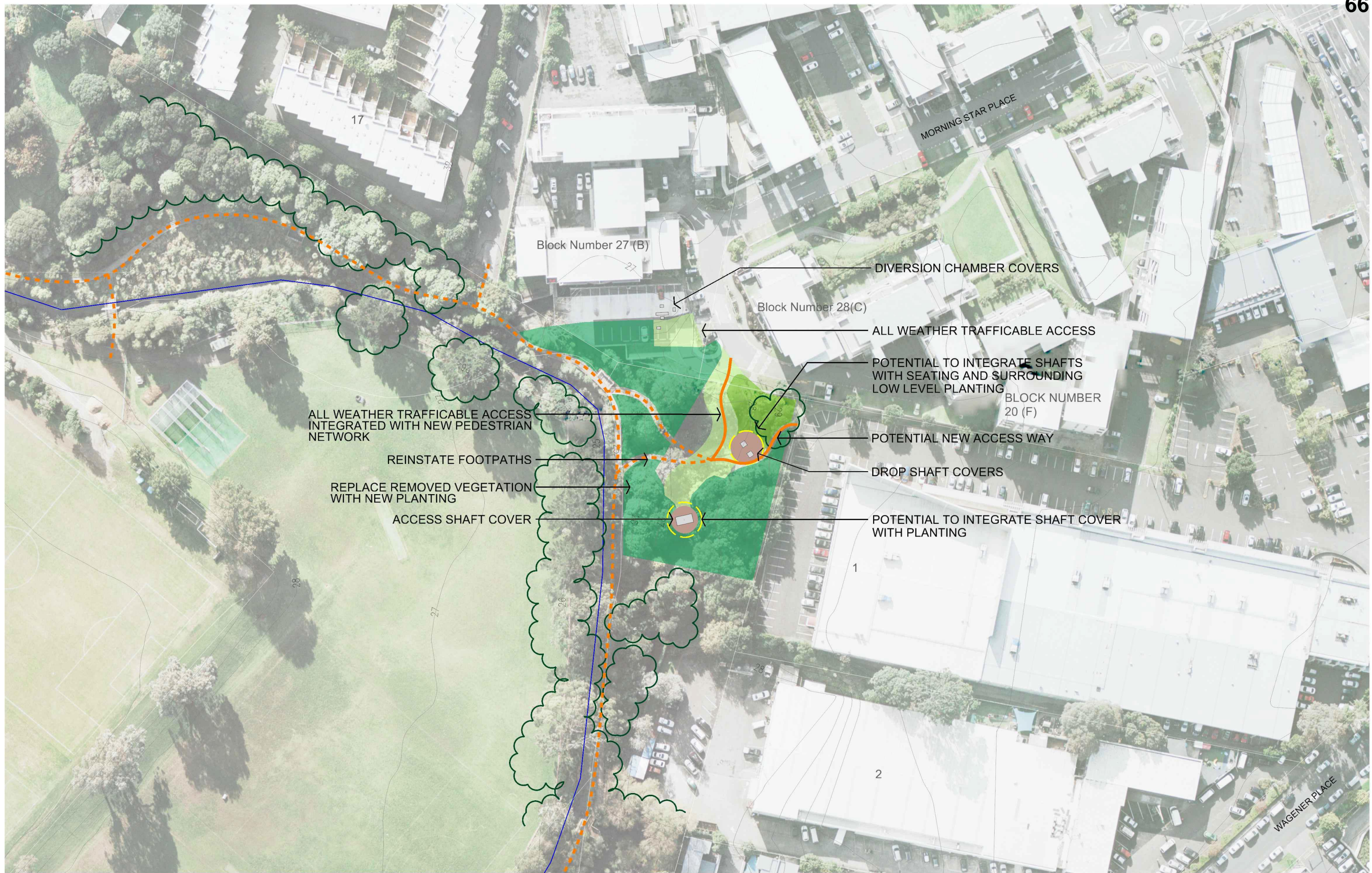
Roy Clements Treeway looking West

A08301A_314_AS2_Lyon_Ave_revC.dgn



Note: Site layout indicative only. Final layout dependant on Construction Management Plan

A08301A_414_AS2_Lyon_Ave_revC.dgn



ALL WEATHER TRAFFICABLE ACCESS INTEGRATED WITH NEW PEDESTRIAN NETWORK

REINSTATE FOOTPATHS

REPLACE REMOVED VEGETATION WITH NEW PLANTING

ACCESS SHAFT COVER

DIVERSION CHAMBER COVERS

POTENTIAL TO INTEGRATE SHAFTS WITH SEATING AND SURROUNDING LOW LEVEL PLANTING

POTENTIAL NEW ACCESS WAY

DROP SHAFT COVERS

POTENTIAL TO INTEGRATE SHAFT COVER WITH PLANTING

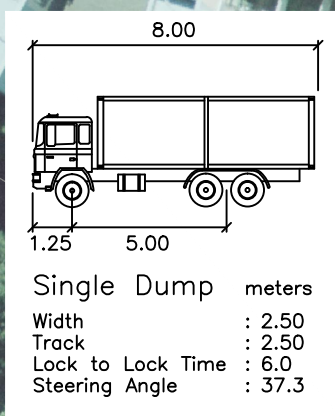
Note: Site layout indicative only. Final layout dependant on Site Reinstatement Plan



Key:

1. Drop Shaft Covers.
2. Maintenance Vehicle access, grass/aggregate surface treatment.
3. Existing Pohutukawa retained.
4. Existing path re-instated.

Note: Indicative design principles Final design subject to site reinstatement plan.



Wednesday, 17 July 2013 9:19:03 a.m. 0 20mm@A3

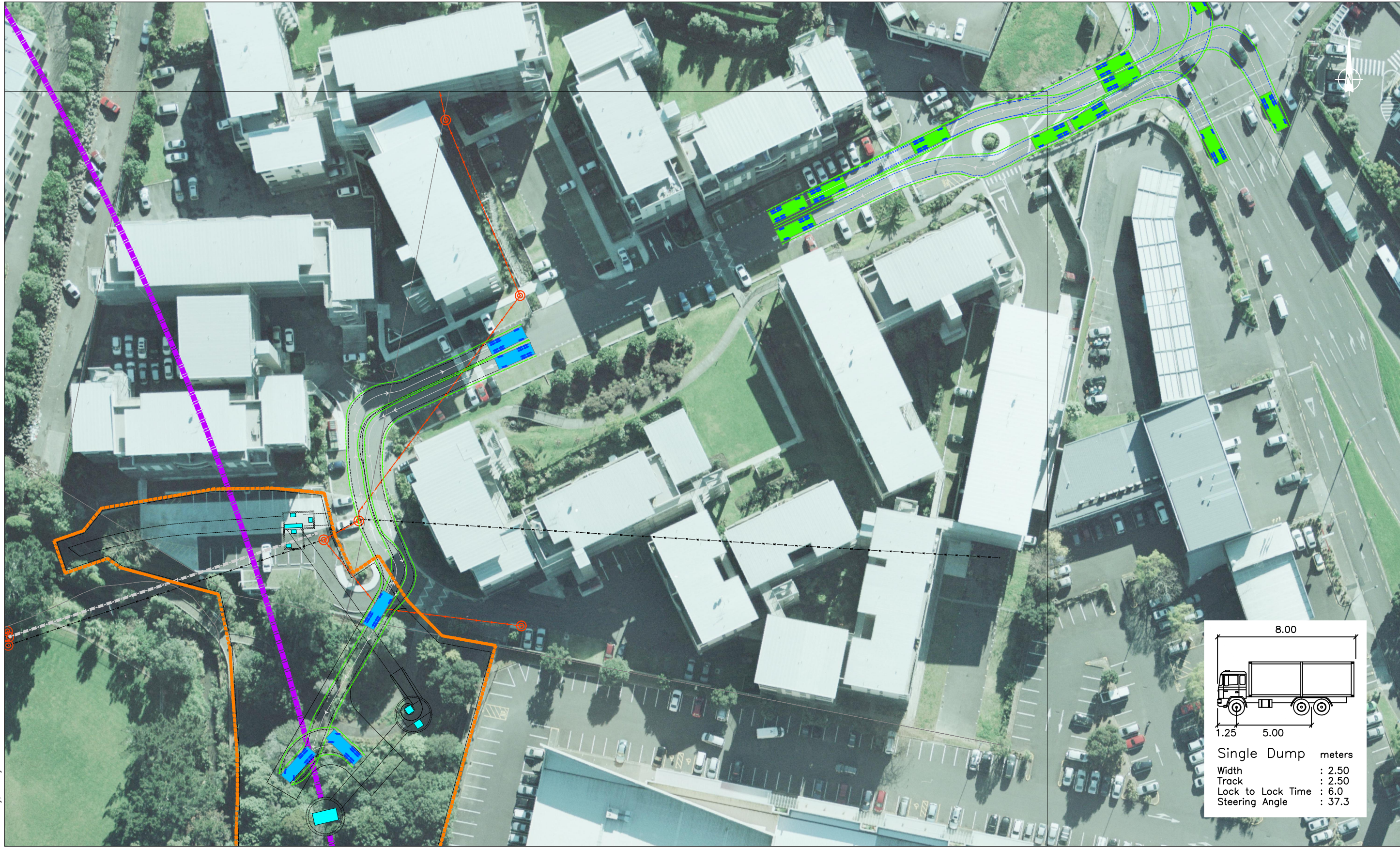
REV	DATE	DRN	CHK	DESCRIPTION

WATERCARE CENTRAL INTERCEPTOR
 LYON AVENUE (AS2) - TRUCK TRACKING



DRAWN: SP	---	---
DATE: 17.07.13	STATUS: ---	---
SCALE: 1:750@A3	---	
DWG NO:11117A6E	---	





Wednesday, 17 July 2013 9:19:03 a.m. 0 20mm@A3

8.00	
1.25	5.00
Single Dump meters	
Width	: 2.50
Track	: 2.50
Lock to Lock Time	: 6.0
Steering Angle	: 37.3

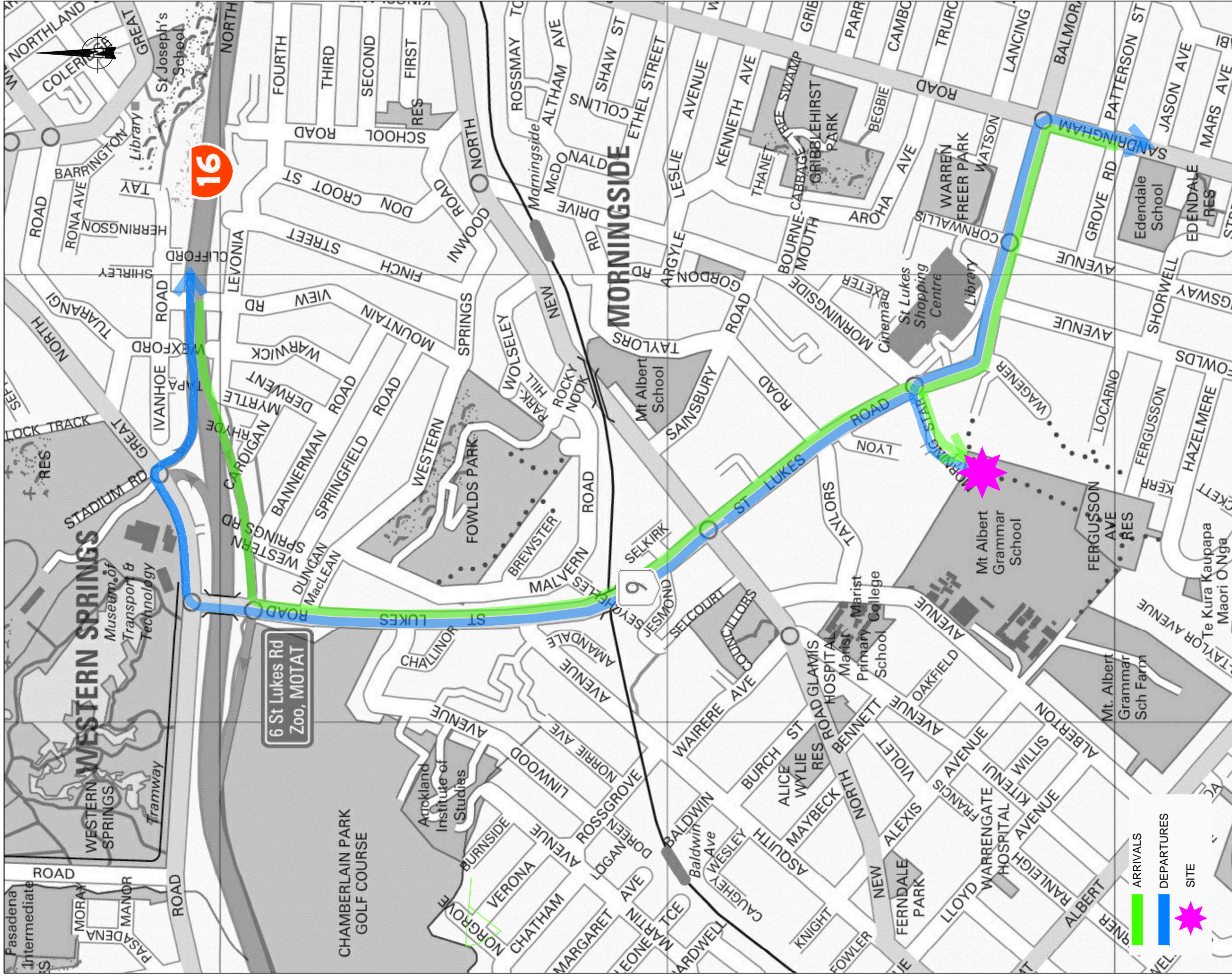
REV	DATE	DRN	CHK	DESCRIPTION

WATERCARE CENTRAL INTERCEPTOR
LYON AVENUE (AS2) - TRUCK TRACKING



DRAWN: SP	---	---
DATE: 17.07.13	STATUS: ---	
SCALE: 1:750@A3		
DWG NO:11117A6E		





Friday, 19 July 2013

Watercare - Lyon Avenue (AS2) Truck Routes

Traffic Design Group



7.V2

SCALE: N.T.S

Unallocated Page